

LEGEND:

ELECTRICAL OWNERSHIP DEMARCATION (NOTE B)		H - HYDRO OTTAWA C - CUSTOMER
PADMOUNTED TRANSFORMER		
POLEMOUNTED TRANSFORMER		
METER BASE		
POLE		
PROPERTY LINE		
UNDERGROUND CABLE		
OVERHEAD CABLE		

NOTES:

- A. SEE SECTION 3.1 OF THE CONDITIONS OF SERVICE FOR OWNERSHIP DEMARCATION PRIOR TO NOV 1, 2001.
- B. OWNERSHIP DEMARCATION MAY DIFFER FOR PRIVATE DEVELOPMENT OR NON STANDARD INSTALLATION.
- C. CIVIL OWNERSHIP DEMARCATION POINT IS THE CLOSER OF THE PROPERTY LINE OR EASEMENT.
- D. REFER TO ECG0009 OR ECG0005 FOR 3PH OR 1PH, >600A SERVICES.

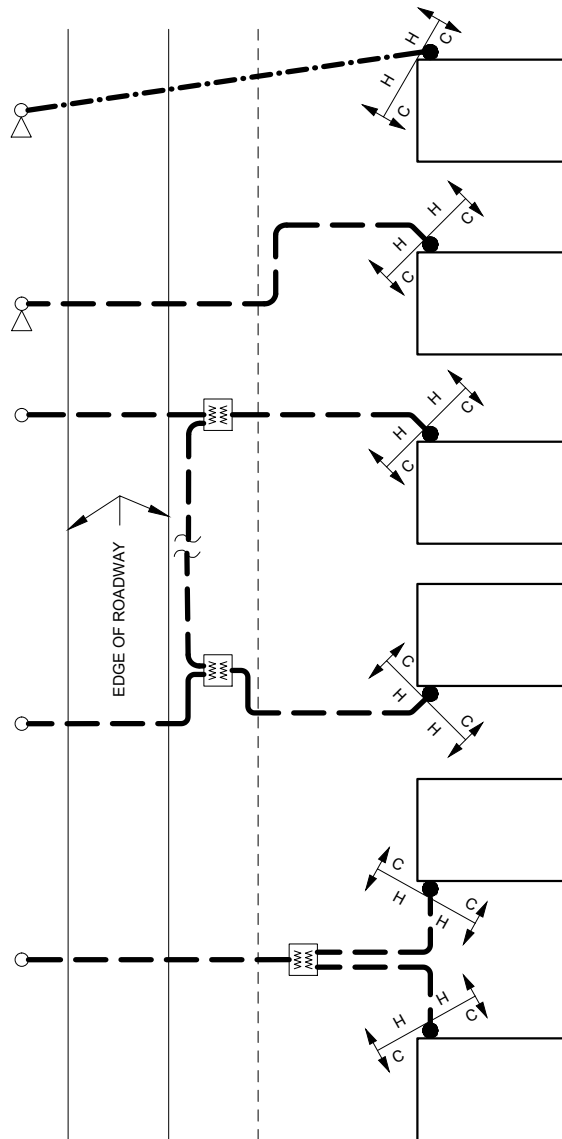



FIGURE 1:
RESIDENTIAL
120/240V, ≤ 200A
OVERHEAD SERVICE

FIGURE 2:
RESIDENTIAL
120/240V, ≤ 400A
UNDERGROUND
SERVICE

FIGURE 3:
RESIDENTIAL
120/240V, ≤ 600A
UNDERGROUND
SERVICE FOR
SUBDIVISION

FIGURE 4:
RESIDENTIAL
120/240V, ≤ 600A
UNDERGROUND SERVICE
FOR HIGH DENSITY
OR
MULTI-UNIT COMPLEX
DEVELOPMENT

REVISIONS	PREP	CHKD	APPD
REV: 1 DATE: 2016-10-25 CHANGE: REVISED LAYOUT AND NOTES.	GM	KM	CSM
REV: 2 DATE: 2021-12-13 CHANGE: ADDED HIGH DENSITY RESIDENTIAL INSTALLATION	EV	PL	MW
REV: CHANGE:			



HydroOttawa
WWW.HYDROOTTAWA.COM

PREP: F. BOLO
CHKD: K. McROBERTS
APPD: D. FEE P. Eng.
DATE: 2002-05-22
SCALE: N.T.S. @ ANSI A

TITLE		ENGINEERING SPECIFICATION RESIDENTIAL SECONDARY SERVICE TYPICAL OWNERSHIP DEMARCATON GUIDELINE	
NO:		ECG0003	REV: 2
		1 OF 1	2